



## 2024 GP SVHO

Turn your adrenaline up to 11 with the impressive racing-inspired GP SVHO in an iconic vibrant Deep Purplish Blue Metallic. Go beyond extreme with a supercharged ultra-powerful 4-cylinder SVHO engine. Cut through the waves in total confidence thanks to the lightweight hull, slim design and cornering precision, delivering excitement without compromise.

### Ultimate performance.

Feel the joy and exhilaration of an instant blast of flagship-level power. The GP SVHO is a class-leading model featuring an array of engineering innovations that make riding it a straight shot in the arm of pure excitement. The Yamaha Motor signature features the lightweight NanoXcel2® hull, deck-paired with the revolutionary RiDE® control system for premium performance.

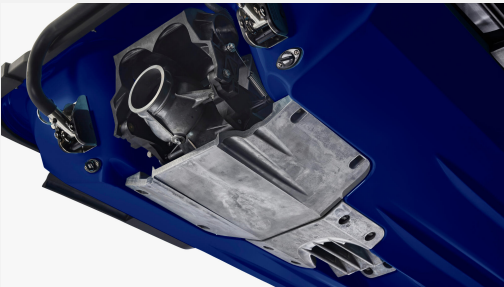
We did the detail, so you get all the thrills with superb levels of control. A race-inspired top-loader sports grate and ride plate enhance handling, cornering and rough water hook-up. Furthermore, the lower centre point of gravity, improved ergonomics seating, and handlebar design deliver a greater rider experience.

# 2024 GP SVHO - BITNE KARAKTERISTIKE



## Race-inspired ergonomics

The balance and stability of the GP have been enhanced by lowering and centralising the centre of gravity along with the adoption of a narrower design for both the seat and the fully adjustable, race-design handlebar. Combined with the ergonomic sitting position and deeper footwells, the result is an amazing level of rider control.



## Auto-trim function

This exclusive, industry-first system offers a fully automatic trim function, which operates independently of the efficient electronic trim control on the handlebar. When engaged, Cornering Control automatically shifts the trim down when decelerating for sharp cornering - Launch Control shifts the trim down to prevent bow rise when accelerating quickly.



## 4.3-inch multi-function colour display with fast access

Among its many talents, this clear and easy-to-read display helps you control and monitor all the systems on board, using the fast-access buttons next to the unit. Top speed and acceleration limits can also be entered from here - along with the PIN code-activated learning (L-mode) and security settings. We put the latest technology to work for you!



## Race-inspired pump design

Improving both acceleration and handling, the pump, impeller and intake grate have been introduced as a result of the excellent results achieved in racing. The extra grip it gives on the water enhances responsive and accurate handling in all conditions.



## Supercharged, DOHC, 16V 1,812cc engine

The 4-cylinder DOHC 1.8 Litre SVHO engine is the largest displacement in the industry, yet thanks to our continuous programme of innovation and product improvement, it is extremely compact. The result is astonishing power, acceleration and huge torque, along with clean efficiency and economy.



## Extended rear platform and towing hook

The GP SVHO will appeal to water sports fans as well as speed enthusiasts, with its comfortable three-person seat, large integral mirrors, an extended rear platform with a large, soft-touch re-boarding step - and its strong, practical tow hook. Comfortable, slip-resistant Hydro-Turf mats are a pleasure to step onto after swimming.



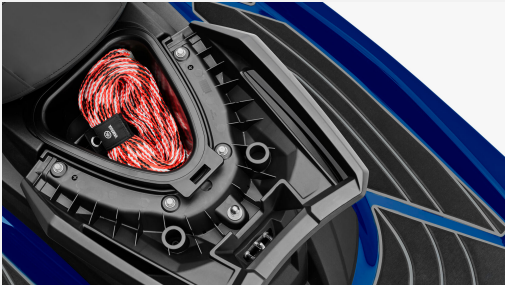
## Lightweight hull and body for top performance

Made possible by Yamaha's unique materials technology, NanoXcel2® is an impressive 18% lighter than our revolutionary NanoXcel® - yet just as rigid and strong. It maximises the exciting performance of both the latest GP models, helping it deliver its sensational acceleration, even sharper cornering - and more stability at high speed.



## Race-inspired adjustable steering

The adaptable steering system has exposed handlebars that are tilt-adjustable. A narrower race-inspired design has been used for the bar itself, along with the very latest control boxes and grips, to provide even more confident control for the rider.



## Extensive and practical storage facilities (114 Litres)

The latest GP models have ample amounts of storage space so that you can take everything you might need along with you. In addition to the huge under-seat and bow storage compartments, there's a very large and convenient glove box.



**RiDE® system (Reverse with Intuitive Deceleration Electronics)**

The revolutionary RiDE® system transforms your riding pleasure, bringing a feeling of confidence to every rider... at every level. Simply pull the throttle lever on the right hand-grip to move forward and accelerate - pull the lever on the left grip to slow down or to reverse. Yes, it's really that simple!

# 2024 GP SVHO - TEHNIČKA SPECIFIKACIJA

## Engine

Engine type	4-stroke, 4-Cylinder, Super Vortex High Output
Lubrication system	Wet sump
Supercharger	Yes
Displacement	1,812cc
Bore x stroke	86mm x 78mm
Compression ratio	8.5 : 1
Pump Type	160mm axial flow
Fuel	Unleaded premium Gasoline
Fuel supply system	Electronic Fuel Injection
Fuel capacity	70L
Oil capacity	5.3L

## Dimensions

Length	3.35m
Width	1.24m
Height	1.2m
Dry weight	342kg

## Features

Storage Capacity	107.6L
Rider capacity	1-3 persons

## Ograničenje opterećenja

Storage Capacity	107.6L
Rider capacity	1-3 persons